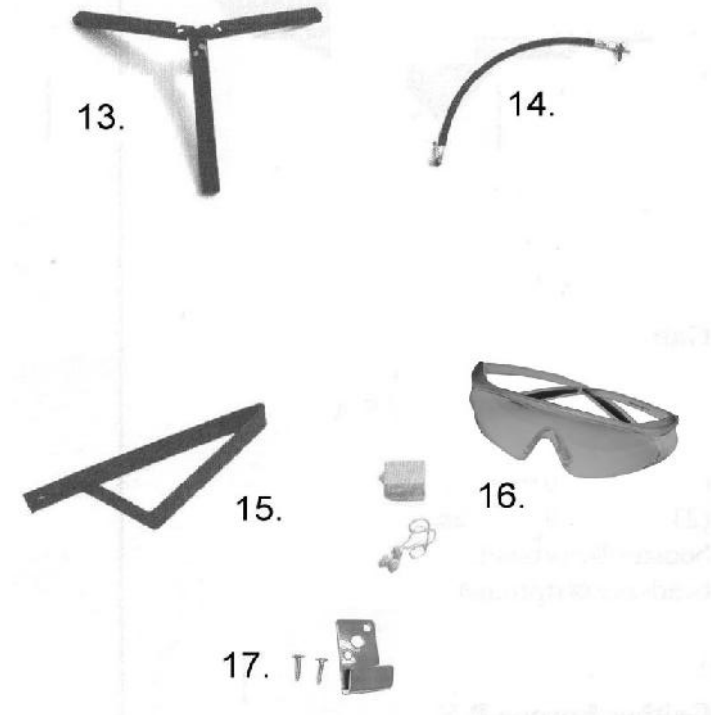
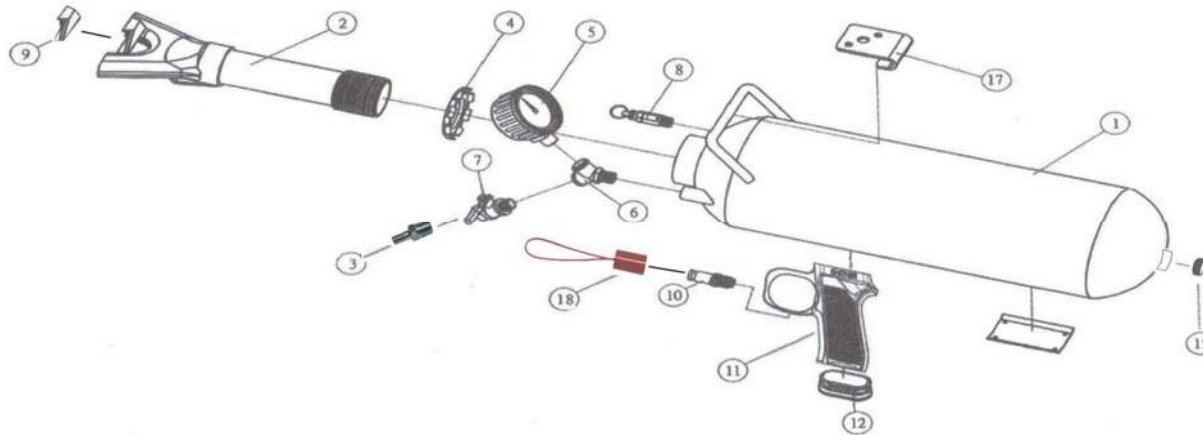


Bead Bazooka® (Gaither's BB6L / BB9L / 2" BB12L)

Bead Bazooka Accessories

Replacement Parts list



<u>Ref. No.</u>	<u>Part No.</u>	<u>Description</u>
1.	12910 B	Air Tank w/piston valve inside
2.	12913 B 12913 B2	Slotted Barrel 2 Inch Slotted Barrel (2"BB12L)
3.	12927	Universal connector
4.	12912 B 12912 B2	(38.1 mm) 1½" Lock Nut (50.8 mm) 2" Lock Nut (2"BB12L)
5.	12914 B	Pressure Gauge 10Bar
6.	12915 B	Y Connect
7.	12916 B	(6.35 mm) ¼"PT Intake valve
8.	12917 B	Safety Valve Max 10Bar
9.	12927 B 12927 B2	Plastic Protector Wide Plastic Protector (2"BB12L)
10.	12919 B	Switch Valve
11.	12920 B	Grip w/trigger guard
12.	12921 B	Plastic Plug
18.	12919 BS	Safety Trigger Caps
19.	12928 B	(19.05 mm) ¾" PT Inner Hex Plug (2"BB12L)

13.	GB-51	KD-Tire Stand
14.	GB-52	Air-Whip Hose
15.	GB-53	Tire Wedge
16.	GB-54	Safety Pack (goggles & ear plugs)
17.	GB-55	Wall Clip w/2 screws
	GB-56	Wide Wall Clip w/4 screws(2"BB12L)

Gaither recommends this Bead Bazooka® tank be replaced after 5 years.