



NEW MODEL / NUOVI MODELLI

AVVOLGITUBO SERIE 8400

HOSE REELS SERIES 8400

**ANCORA
PIÙ FLUIDI**

EVEN MORE FLUID.

ZECA

Serie 8400

AVVOLGITUBO PER USO PROFESSIONALE

ISO EN 12100



2006/42/CE



Conforme alla Direttiva
Compliance with Directive

Directive 94/9/EC (ATEX)

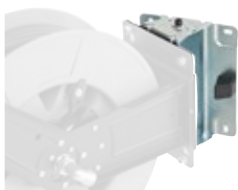
Marcatura / Marking **CE Ex II 2 GD c IIB T4/T135°C X**

OPTIONAL AGGIUNTIVI

OPTIONAL

Staffa orientabile

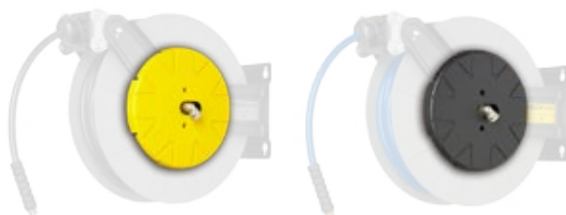
Swivel bracket



ART.8400/SW

Coperchio bobina

Coil cover

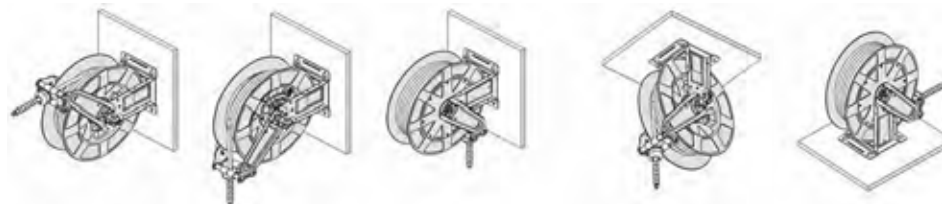


ART.8400/CY

ART.8400/CB

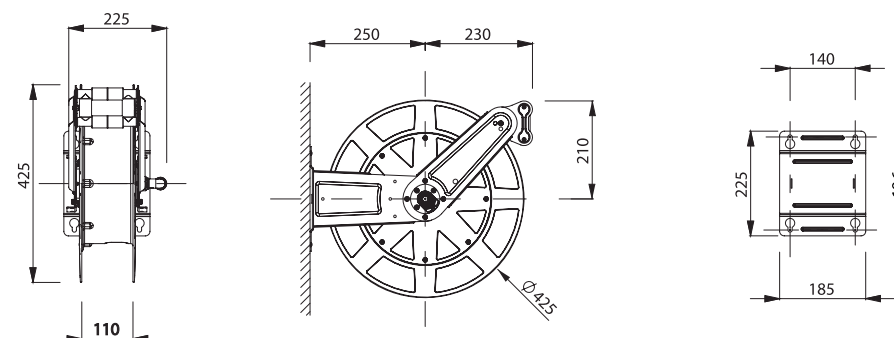
INSTALLAZIONI POSSIBILI

TYPE OF POSSIBLE INSTALLATION



DIMENSIONI

DIMENSION



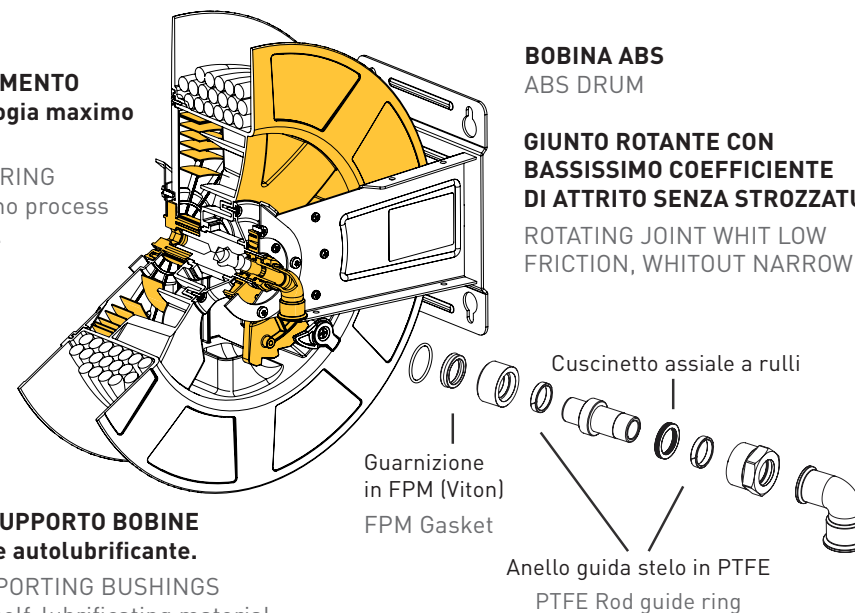
**MOLLA DI
RIAVVOLGIMENTO
con tecnologia maximo
process.**

RECOIL SPRING
with maximo process
technology.

**BOBINA ABS
ABS DRUM**

**GIUNTO ROTANTE CON
BASSISSIMO COEFFICIENTE
DI ATTRITO SENZA STROZZATURE**

ROTATING JOINT WITH LOW
FRICTION, WITHOUT NARROWING



**BOCCOLE SUPPORTO BOBINE
in materiale autolubrificante.**

DRUM SUPPORTING BUSHINGS
made with self-lubricating material.

Guarnizione
in FPM (Viton)
FPM Gasket

Cuscinetto assiale a rulli

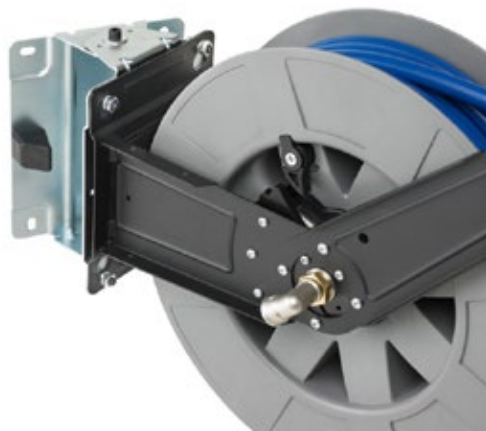
Anello guida stelo in PTFE
PTFE Rod guide ring

CARATTERISTICHE TECNICHE: TECHNICAL CHARACTERISTICS:

- **Staffe in acciaio verniciato a polveri epossidiche.**
Brackets in iron, painted with epoxy resin powders
- **Sistema automatico di arresto del tubo alla lunghezza desiderata.**
Automatic blocking device for the hose at the required length.
- **Bocca a rulli posizionabile in diverse configurazioni per favorire lo svolgimento e il riavvolgimento del tubo.**
Reel mouth that can be moved in different configurations to help the reeling of the hose
- **Tampone fermatubo regolabile.**
Adjustable hose blocking buffer

Numero del Certificato di Esame di tipo
Type Examination Certificate number
IMQ 14 ATEX 009 X

Conforme alle norme
Compliance with
EN 1127-1 : 2011 | EN 13463-1: 2009 | EN 13463-5 : 2011



	Tipo tubo <i>Hose Type</i>	Ø Tubo <i>Hose Ø (mm)</i>	Lung. Tubo <i>Hose Lenght (m)</i>	Art.		Temperatura Fludio <i>Fluid Temperature</i>	Raccordo Uscita <i>End Pipe Fitting</i>	Raccordo Entrata <i>Incoming Fitting</i>
ARIA ACQUA <i>AIR WATER</i> 20 bar	Senza tubo No hose	/	/	8401	/	-15°C/+50°C	1/2" F	1/2" F
	NBR	8	20	8402	/		1/4" M	
		10	12	8404			3/8" M	
			18	8406			1/2" M	
		12,5	10	8408			3/8" M	
			15	8410			1/2" M	
	KPU	10	20	8424			3/8" M	
		12,5	15	8426			1/2" M	
			20	8427				
	DIESEL - OIL 15 bar	PVC - PU	3/4"	8	8415		/	
OLIO - OIL 160 bar		EN 857 1SC	1/2"	10	8474	/	-15°C/+120°C	1/2" F girevole - swivelling
	Senza tubo No hose	/	/	8440	/	-15°C/+130°C	1/2" F	
EN 857 1SC Nero-Black		5/16"	20	8441	/		3/8" F girevole - swivelling	
		3/8"	15	8442				
			18	8443				
15			8446					
18	8448							
OLIO GRASSO <i>OIL GREASE</i> 400 bar	Senza tubo No hose	/	/	8460	/	-20°C/+120°C	1/2" F	3/8" F
	EN857 2SC	1/4"	12	8462	/		1/4" M	
			18	8463	/			



Strada della Chiara,25
10080 Feletto Canavese (To) Italy

Tel. +39 0124 499611

Fax +39 0124 490669

export@zeca.it

italia@zeca.it